

nutrix

Turkey with rice

Adult Dog

Super Premium Range



The **Super Premium** range benefits from a variety of high quality protein sources.

The range provides a selection of hypoallergenic recipes formulated without common food allergens for dogs - beef, pork, wheat, wheat gluten, dairy and soya.

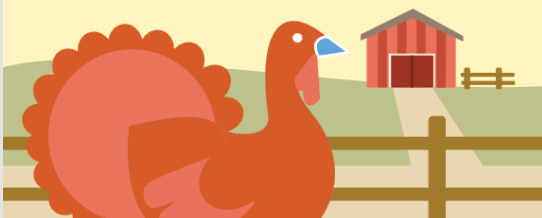
Why Turkey?

Turkey is a **lean** protein source **rich** in essential amino acids. It is also low in fat and a good source of essential nutrients like riboflavin, potassium and selenium.

Why Rice?

Rice is a carbohydrate source ideal for dogs with sensitive digestion.

Adult
Turkey with rice
Original



Recipe Claims

27% Total Turkey

A responsibly sourced and highly digestible protein source.



Added Seaweed

Contains seaweed, known as a rich source of minerals and trace elements that contribute to overall health & well-being.



Sensitive Digestion

Formulated with a single animal protein source, turkey, to help dogs with a sensitive digestive tract.



Skin & Coat

Contains Omega 3 & 6 essential fatty acids to help maintain a healthy skin & shiny coat.



Immune System

Contains vitamins and minerals to help maintain a healthy immune system.

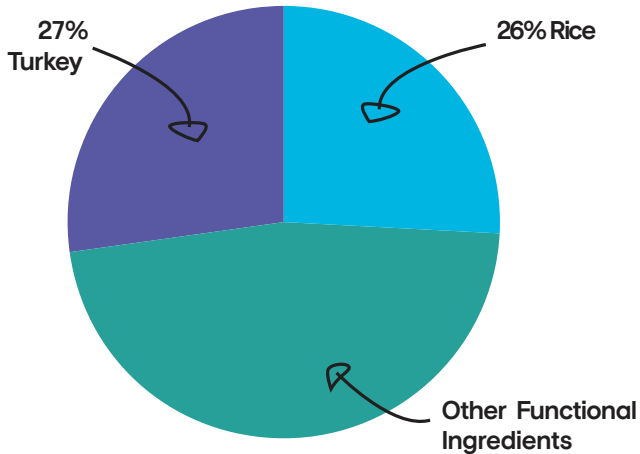


No Added Artificial Colours & Preservatives

Naturally preserved using rosemary extract.



COMPOSITION



27% Dried Turkey, Rice (26%), Oats, Barley, Chicken Fat, Linseed, Lucerne, Minerals, Vitamins, Dried Seaweed(0.5%)

BAG SIZES

- Available in a variety of bag sizes
- 18 month shelf life.



KIBBLE SIZE

- Optimal kibble size and shape for adult dogs.
- A crunchy kibble texture.



ANALYTICAL CONSTITUENTS

Crude Protein	24%
Crude Fat	10%
Crude Fibre	4%
Crude Ash	7%
Moisture	8%
NFE	47%
Metabolisable Energy	348 kcal/100g
Omega 6	2.3%
Omega 3	0.9%
Calcium	1.5%
Phosphorus	1%

NUTRITIONAL ADDITIVES PER KG:

Vitamins: Vitamin A 14,400 IU, Vitamin D3 1,925 IU, Vitamin E 95 IU

Trace Elements: Iron (Iron (III) Sulphate Monohydrate) 50 mg, Zinc (Zinc Sulphate Monohydrate) 50 mg, Manganese (Manganous Sulphate Monohydrate) 35 mg, Copper (Copper (II) Sulphate Pentahydrate) 12 mg, Iodine (Calcium Iodate Anhydrous) 1 mg, Selenium (Sodium Selenite) 0.19 mg

FEEDING GUIDE*

Weight of Dog (kg)	Grams per day (g)
	Adult Dog
1 - 5kg	25 - 80g
5 - 10kg	80 - 130g
10 - 20kg	130 - 215g
20 - 30kg	215 - 295g
30+kg	295+g

* All dogs are different and the guidelines should be adapted to take into account breed, age, temperament and activity level of the individual dog. When changing foods please introduce gradually over a period of two weeks. Always ensure fresh, clean water is available.

NUTRIX PETFOODS

www.nutrixpetfoods.co.uk
 sales@nutrixpetfoods.co.uk
 Tel: 01282 918001 / 07971170240