

# nutrix

## Salmon with potato

### Adult Dog

#### Super Premium Range



The **Super Premium** range benefits from a variety of high quality protein sources.

The range provides a selection of hypoallergenic recipes formulated without common food allergens for dogs - beef, pork, wheat, wheat gluten, dairy and soya.

#### Why Salmon?

**Salmon** is naturally rich in omega 3 essential fatty acids which have anti-inflammatory properties and provide support for skin and coat condition and joint health.

#### Why Potato?

**Potato** is an easily digestible carbohydrate source ideal for dogs with sensitive digestion.



#### Recipe Claims

##### 44% Total Salmon

A responsibly sourced and highly digestible protein source.



##### Sensitive Digestion

Formulated with a single animal protein source, salmon, to help dogs with a sensitive digestive tract.



##### Digestive Health

Contains beet pulp - a good source of soluble and insoluble dietary fibre which are important for maintaining normal intestinal transit time and motility.



##### Skin & Coat

Contains Omega 3 & 6 essential fatty acids to help maintain a healthy skin & shiny coat.



##### Immune System

Contains vitamins and minerals to help maintain a healthy immune system.

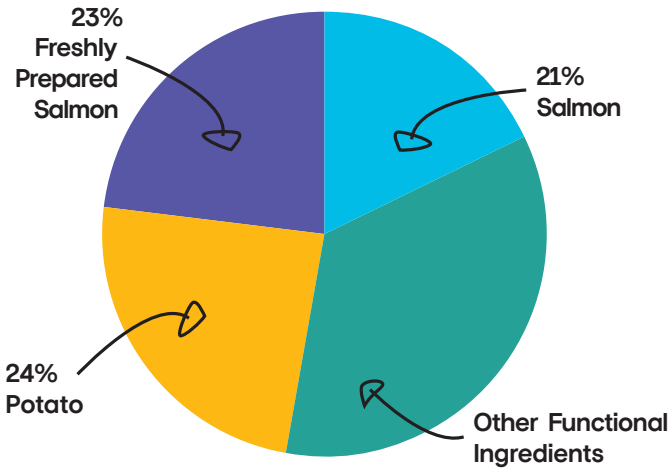


##### No Added Artificial Colours & Preservatives

Naturally preserved using rosemary extract.



## COMPOSITION



Salmon 44% (Including Freshly Prepared Salmon 23%, Dried Salmon 13%, Salmon Oil 6% & Salmon Gravy 2%), Potato (24%), Oats, Maize (13%), Beet Pulp (4%), Minerals, Vitamins

## BAG SIZES

- Available in a variety of bag sizes
- 18 month shelf life.



## KIBBLE SIZE

- Optimal kibble size and shape for adult dogs.
- A crunchy kibble texture.



## ANALYTICAL CONSTITUENTS

Crude Protein	22%
Crude Fat	10%
Crude Fibre	3%
Crude Ash	7.5%
Moisture	8%
NFE	49.5%
Metabolisable Energy	353 kcal/100g
Omega 6	1.7%
Omega 3	1.1%
Calcium	1.5%
Phosphorus	1%

## NUTRITIONAL ADDITIVES PER KG:

**Vitamins:** Vitamin A 14,400 IU, Vitamin D3 1,925 IU, Vitamin E 95 IU

**Trace Elements:** Iron (Iron (II) Sulphate Monohydrate) 50 mg, Zinc (Zinc Sulphate Monohydrate) 50 mg, Manganese (Manganous Sulphate Monohydrate) 35 mg, Iodine (Calcium Iodate Anhydrous) 1 mg

## FEEDING GUIDE\*

Weight of Dog (kg)	Grams per day (g)
	Adult Dog
1 - 5kg	25 - 85g
5 - 10kg	85 - 145g
10 - 20kg	145 - 245g
20 - 30kg	245 - 330g
30+kg	330+g

\* All dogs are different and the guidelines should be adapted to take into account breed, age, temperament and activity level of the individual dog. When changing foods please introduce gradually over a period of two weeks. Always ensure fresh, clean water is available.

## NUTRIX PETFOODS

www.nutrixpetfoods.co.uk  
 sales@nutrixpetfoods.co.uk  
 Tel: 01282 918001 / 07971170240